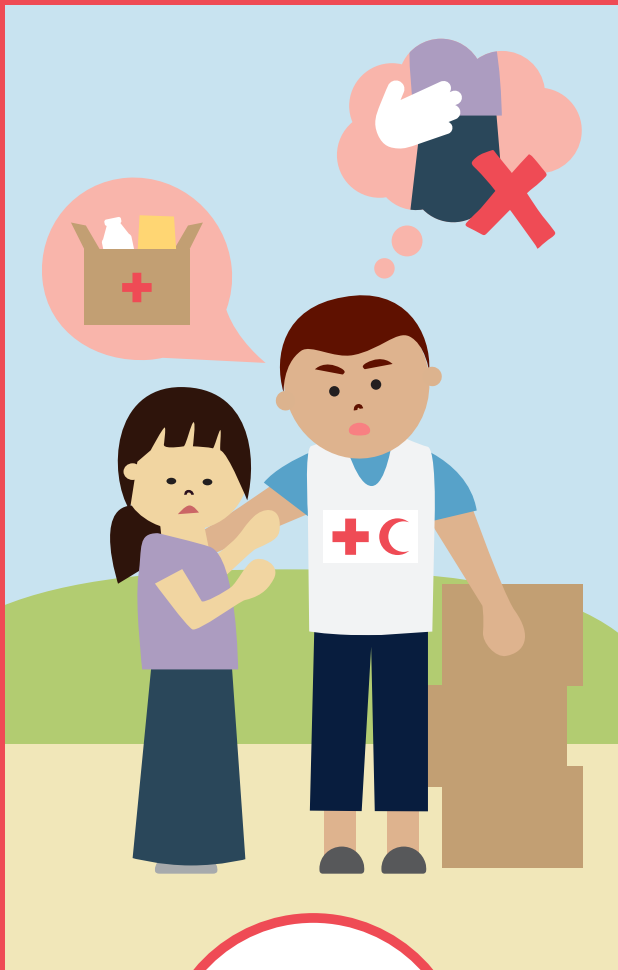


WE PROMOTE HIGH STANDARDS OF BEHAVIOUR

No sexual activity with people who look to, or benefit from, our services.



RECOGNISE

signs of sexual exploitation and abuse and sexual harassment by a RCRC worker.

No sexual activity with any person under the age of 18.



RESPOND

if someone shares a concern with you – find a safe place to listen but DO NOT act.

No use of power, work or money in exchange for sex, including any use of sex workers.



REPORT

when you see, hear or feel concerned about a member of the community or colleague.

Failure to report a concern about sexual exploitation or abuse of a child could lead to sanctions and possibly prosecution.

HOW TO REPORT A CONCERN ABOUT SEXUAL EXPLOITATION OR ABUSE OR SEXUAL HARASSMENT?

- ✓ Your local reporting system, such as a Human Resources department, PSEA or protection focal point.
- or
- ✓ IFRC independent and confidential reporting line, set up by IFRC for use by all Red Cross Red Crescent people

