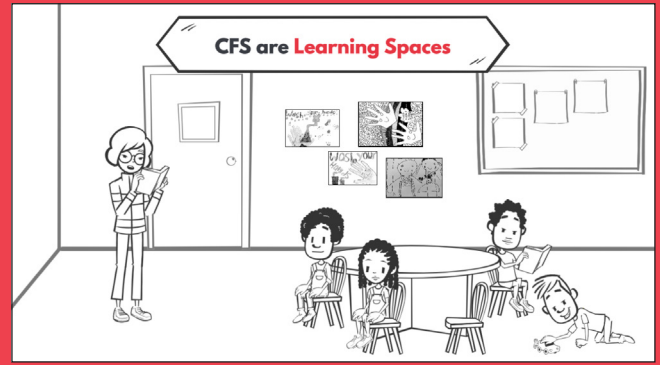


What is a Child Friendly Space in an Emergency?



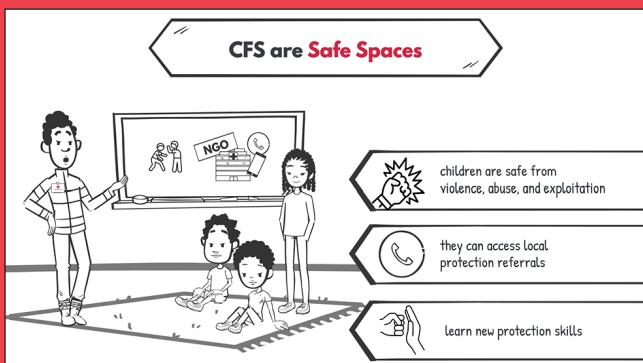
↪ CFS are Caring Spaces

A space for children to interact with other children and caring adults, learn skills to cope with distress, care for their mental health and psychosocial wellbeing, and play



↪ CFS are Learning Spaces

A space where children can continue education activities, learn about Child Rights, develop skills, maintain routines, and have meaningful opportunities to participate in decisions



↪ CFS are Safe Spaces

A space where children are safe from violence, abuse, and exploitation, where they can access local protection referrals, and learn new protection skills



↪ CFS reinforce Community Capacity

A space that helps communities organise child protection committees that represent all community members including children themselves, raise awareness of child protection issues, share referral pathways for children and families in need of extra protection, and act as a place for support and services including Restoring Family Links



↪ CFS can become Cooling Stations in Heat Waves

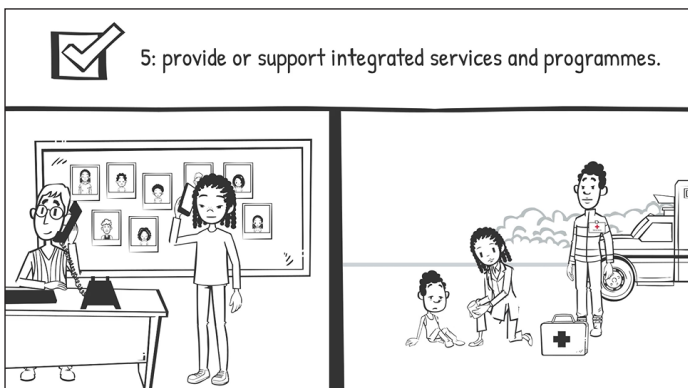
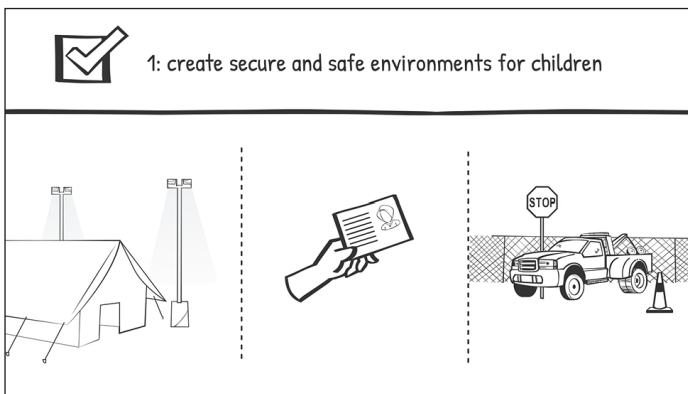
A space for children, especially those often left behind and left out like children connected to the streets, children in labour, and children out of school, to access a space to cool down, hydrate, and access cooling kit

CFS are spaces where children can be children in disasters!

What are the steps to implement an effective Child Friendly Space?

The 6 inter-agency principles for an effective CFS are:

- 1 //** CFS are secure and safe environments for children.
- 2 //** CFS provide a stimulating and supportive environment for children.
- 3 //** CFS build on existing structures and capacities within a community.
- 4 //** CFS use a fully participatory approach in CFS design and implementation.
- 5 //** CFS provide or support integrated services and programmes.
- 6 //** CFS are inclusive and non-discriminatory.

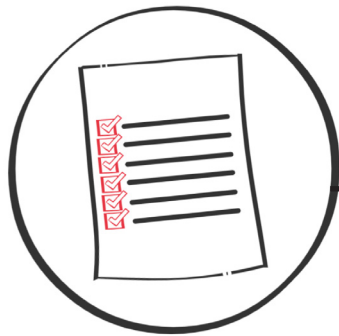


CFS are spaces where children can be children in disasters!

The steps to develop a CFS are:



> Ensure your National Society has child safeguarding systems in place



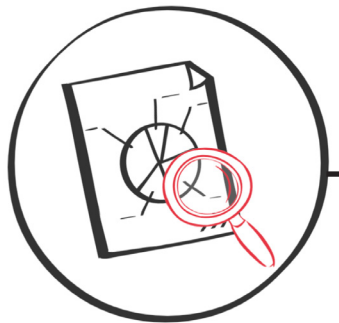
>> Conduct an assessment



>>> Select a site



>>>> Recruit personnel & Train personnel



>>>>> Monitor and evaluate